

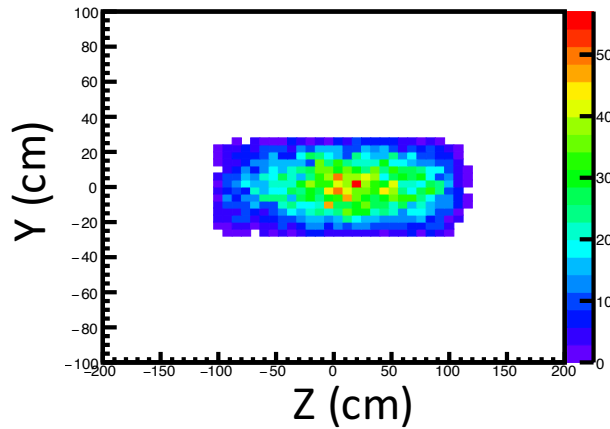
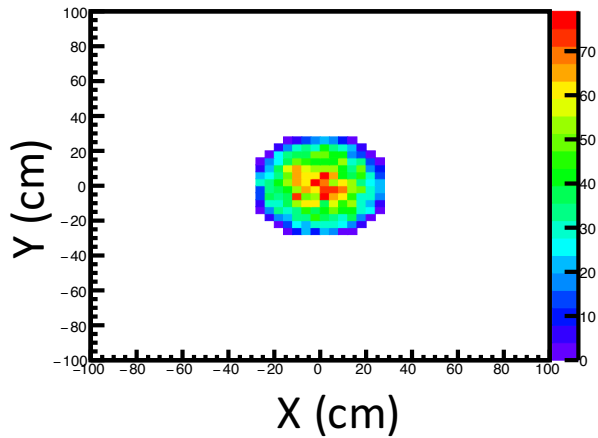
GEANT4 Works

Chamber Profile adjusting

Hiroshi Ito
Chiba Univ.

Chamber profile

K stop position distribution



RandomGaus:

$$\sigma_x = 1.0 \text{ cm}$$

$$\sigma_y = 1.0 \text{ cm}$$

$$\sigma_z = 3.0 \text{ cm}$$

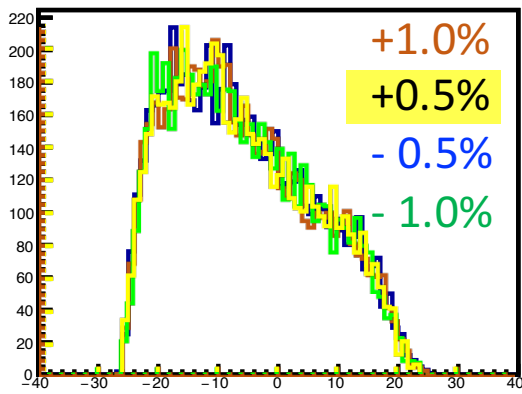


$$\sigma_x = 1.8 \text{ cm}$$

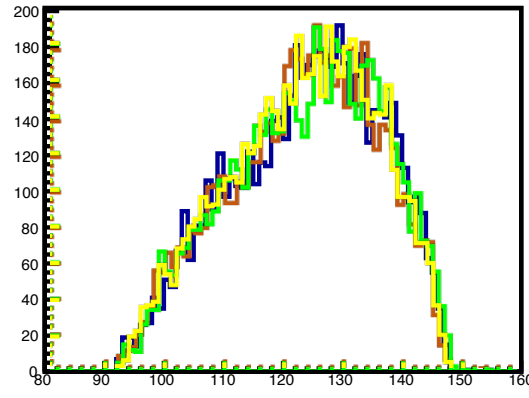
$$\sigma_y = 1.8 \text{ cm}$$

$$\sigma_z = 7.5 \text{ cm}$$

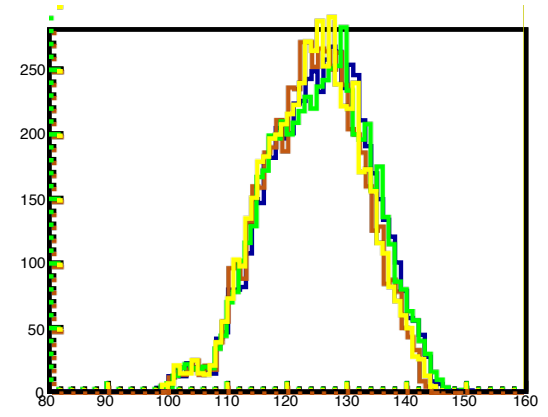
Magnetic Field Intensity Dependence



C2Z (cm)



C3R (cm)



C4R (cm)

Summary

- K stop distribution and Magnetic field intensity were adjusted so that the Chamber profiles match in exp. and MC simu.
- E36 G4 MC environment made by me was copied into KEKCC Environment of Kimura and Kobayashi. They were demonstrated to work at Chiba Univ.