

# Performance Demonstration for PET Detector Using 0.2 mm phi Wavelength-Shifting Fibers

A. Kobayashi, H Ito, H Kawai

## I. INTRODUCTION

RECENTLY we are developing a new gamma ray detector using wavelength-sifting-fibers (WLSFs) and scintillator plate (34 mm × 34 mm × 3.4 mm) for Positron Emission Tomography (PET) [1]. It is expected the position resolution and the energy resolution are a few mm [2] and approximately 10% [3], respectively. Mainly the detector has two advantages. First, it can reduce the expense of cutting scintillator into small pieces. Second, it probably achieves the high position resolution by using 0.2 mm phi WLSFs.

In this study, the detector performance for 511-keV gamma ray is estimated by an experiment.

## II. CONCEPT OF DETECTOR

The detector consists of six plate detectors (the effective area is 300 mm × 300 mm) setting up around the human body. The plate detector consists of 8 layers. The structure of a layer is shown in Fig.1.

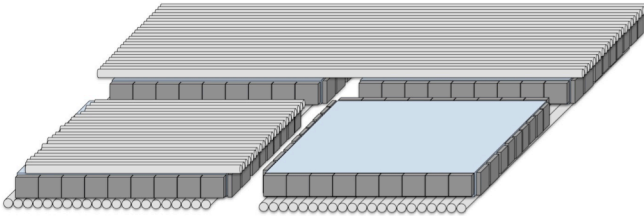


Fig. 1. A schematic of a layer sample which consist of 2 × 2 scintillator plates. WLSFs attached to the surface and SiPMs attached to the side.

Each layer consists of 8 times 8 scintillator plates. The size of each scintillator plate is 34 mm × 34 mm × 3.4 mm. 160 wavelength-sifting fibers (WLSFs) cover each 34 mm × 34 mm surface of each plate along each axis (x or y). Ends of each fiber are connected to silicon photomultipliers (SiPMs). On each side (34 mm × 3.4 mm surface) of plate 10 SiPMs are glued. (Fig.1)

Fig.2 shows a method of gamma ray detection. When a gamma incidents to the plate and deposit energy, the light emitted. The light satisfied total reflection condition propagates WLSFs, detected by SiPMs connected end of the

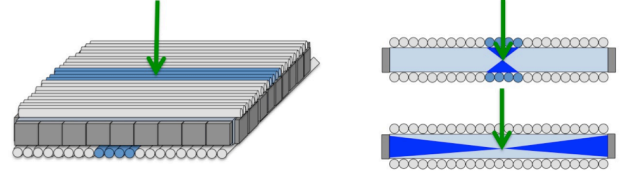


Fig. 2. The method of gamma ray detection.

fiber and the incident position of gamma is measured. On the other hands, the light leaked out from the crystal detected by glued SiPMs on side. Then deposit energy and incident time of gamma are measured.

## III. EXPERIMENT

The setup is shown in Fig.3.

There are two reference detectors and a main detector. One

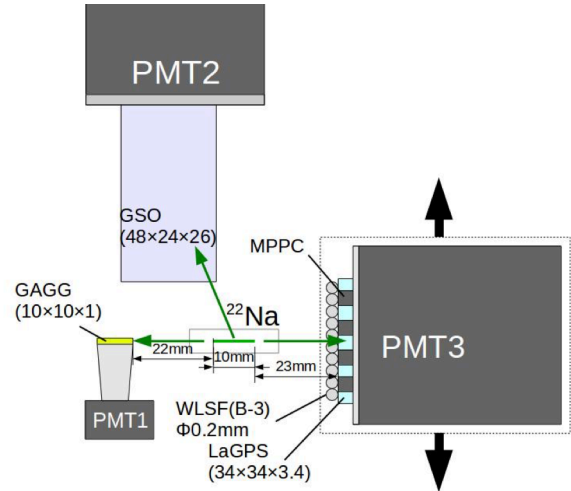


Fig. 3. A schematic of the setup.

of reference consists of GAGG (10 mm × 10mm × 1mm, C&A Co., Ltd.) and PMT1. The other one consists of GSO (48 mm × 24mm × 26mm, Asahi Kasei Co., Ltd.) and PMT2. A main detector consists of a La-GPS [(La,Gd)<sub>2</sub>Si<sub>2</sub>O<sub>7</sub>(Ce)] scintillator (34 mm × 34 mm × 3.4 mm, C&A Co., Ltd.), WLSF[B-3(300)MJ] (Kuraray Co., Ltd.), MPPCs (Hamamatsu Photonics Co., Ltd.) and a PMT3 (Hamamatsu Photonics Co., Ltd.). 160 WLSFs are used in the main detector and each 20 fibers are tied and connected to MPPCs. At each side of La-GPS, 4 MPPCs are glued.

GAGG is at the front of the La-GPS and <sup>22</sup>Na shielded source is between them. When reference using PMT1 and the

This Summary is submitted May 1, 2017.

Atsushi Kobayashi is with Graduate School of Science and Engineering, Chiba University, Chiba, Japan (e-mail: koba@hepburn.s.chiba-u.ac.jp).

Hiroshi Ito is with Graduate School of Science, Chiba University, Chiba, Japan (e-mail: hiroshi@hepburn.s.chiba-u.ac.jp).

Hideyuki Kawai is with Graduate School of Science, Chiba University, Chiba, Japan (e-mail: kawai@hepburn.s.chiba-u.ac.jp).

main detector observe energy more than 341 keV as well as reference using PMT2 observe 700 keV simultaneously, PMT1~3 and MPPCs are read signals. Therefore narrow 511-keV gamma beam (its width is approximately 1mm) enter to the main detector. We did measurements shifting position of the main detector 2 mm apart.

#### IV. RESULTS AND DISCUSSION

The relative of energy of two references and distribution of PMT3 is shown in Fig.4.

Events that PMT1 and PMT3 observe 511-keV gamma ray

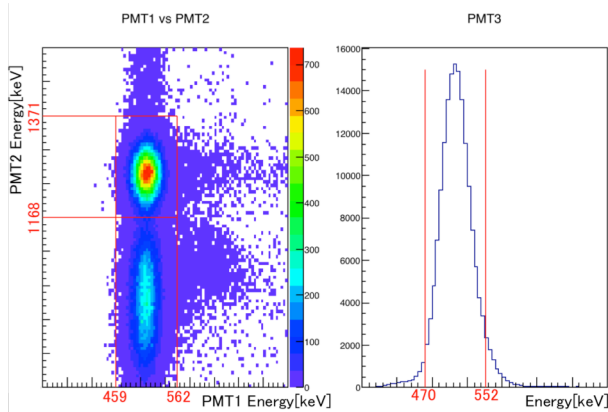


Fig. 4. Distributions of PMTs.

and PMT2 observes 1.27 MeV gamma-ray are selected. Ranges of selection are  $\pm 2$  sigma for each peak.

The total number of photoelectrons of MPPCs connected fibers is  $4.34 \pm 0.02$ . The incident position is reconstructed by the center of gravity calculation of fiber's position and number of photoelectron of connected MPPC. Fig.5 is distribution of reconstruct position at the incident position of 2mm.

The relative of reconstruct position and the incident position

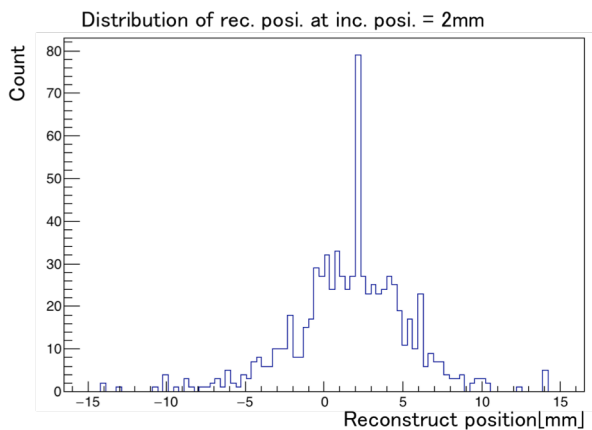


Fig. 4. Distribution of reconstruct position at the incident position of 2mm.

is shown in Fig.6(a). In addition distribution of difference of original incident position and reconstructed position is shown in Fig.6(b).

In Fig.6(b), the red line is double Gaussian fitting that is summation of the blue one and green one. The position resolution is calculated 5.4 mm from red one. In this

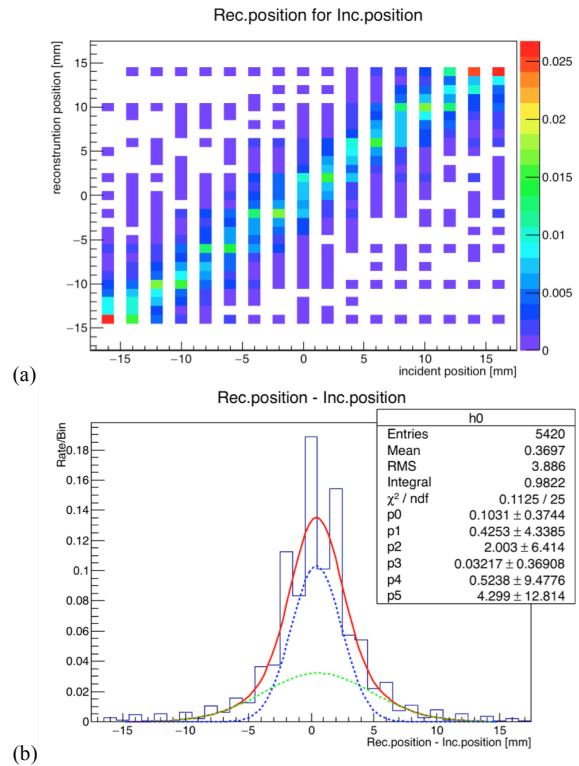


Fig. 6. Those figures show reconstruction of incident position.

(a) A Figure of Reconstruct position vs original position.

(b) A difference of original position and reconstructed position.

experiment, each 20 WLSFs are tied. If WLSFs are not tied and read one by one, the position resolution probably achieve less than 1mm.

The energy resolution is also calculated by the summation of photoelectron of glued MPPCs at side and is approximately 18.8%. In this experiment, 4 MPPCs are glued on a side of La-GPS. It mean that effective area of MPPCs cover only 31% of surface. If 10 MPPCs are used and cover 78% of surface, a number of photoelectrons become two-and-a-half-times. The energy resolution also become less than 12%.

#### V. CONCLUSION

A new PET detector with WLSFs are developed and estimated performance. The position resolution and the energy resolution of demonstration are 5.4 mm and 18.8%, respectively. In addition, we are conducting more accurate experiment and producing a prototype detector. Its result also will be shown in this conference.

#### REFERENCES

- [1] H.Ito, *et al.*, IEEE Medical Imaging Conference 2014, 8-15 Nov. 2014, Seattle, Washington, USA
- [2] A.Kobayashi, *et al.*, Advancements in Nuclear Instrumentation Measurement Methods and their Applications, 223, Apr. 20-24 2015, Lisbon Convention Center, Portugal
- [3] N.naomi *et al.*, Advancements in Nuclear Instrumentation Measurement Methods and their Applications, 220, Apr. 20-24 2015, Lisbon Convention Center, Portugal